



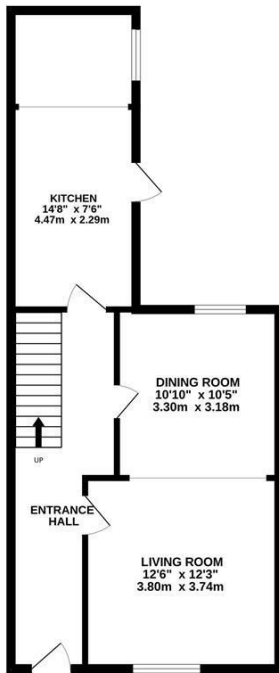
Waldegrave Street, Hastings TN34 1SJ

Offers in excess of £300,000



A spacious four bedroom, THREE STOREY PERIOD HOUSE situated in a central position within Hastings Town centre, just a SHORT WALK FROM THE SEAFRONT and Alexandra Park. Hastings Town centre also offers a collection of shops, local eateries and benefits from a mainline railway station offering connections to London stations. The accommodation is WELL PRESENTED THROUGHOUT benefitting from generous proportions, the living room is positioned on the ground floor and open to the dining room to create a bright, dual aspect space which is perfectly suited to family life. The separate kitchen offers ample storage space with a breakfast nook and access out to the REAR COURTYARD GARDEN. On the first floor there are two double bedrooms together with a large family bathroom and the upper floor houses two further double bedrooms. Both front facing bedrooms also benefit from EN-SUITE SHOWER ROOMS. Being sold with NO ONWARD CHAIN this fantastic property would make the perfect family home.

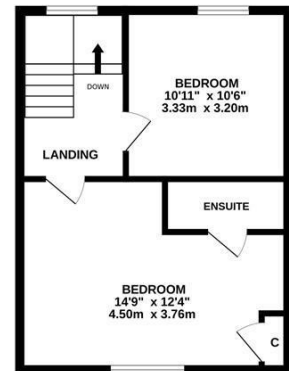
GROUND FLOOR
553 sq.ft. (51.4 sq.m.) approx.



1ST FLOOR
516 sq.ft. (47.9 sq.m.) approx.



2ND FLOOR
398 sq.ft. (37.0 sq.m.) approx.



TOTAL FLOOR AREA: 1467 sq.ft. (136.3 sq.m.) approx.

Whilst every attempt has been made to ensure the accuracy of the floorplan contained here, measurements of doors, windows, rooms and any other items are approximate and no responsibility is taken for any error, omission or mis-statement. This plan is for illustrative purposes only and should be used as such by any prospective purchaser. The services, systems and appliances shown have not been tested and no guarantee as to their operability or efficiency can be given.

Made with Metropix ©2024

